

USE CASE BANNED INDIVIDUAL

Safe Hospitality

Operational View



DETECT

INDIVIDUAL RECOGNIZED

The license plate of a known disruptive individual is recognized entering a parking lot. An alert is automatically sent to appropriate security staff directly on their device of choice and in the command center.



ANALYZE

KNOWN INDIVIDUAL LOCATED

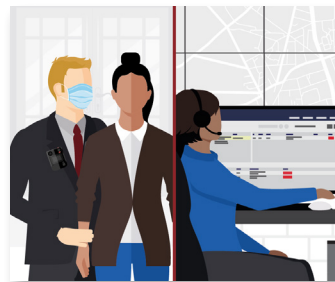
Nearby cameras are populated and security teams monitor the movement of the banned individual. Nearest security resources are located.



COMMUNICATE

SECURITY TEAMS DISPATCHED

Live video and intelligence is shared with security staff monitoring building entrances to intercept the individual and prevent them from entering the facility. Public Safety is also directly alerted for assistance.



RESPOND

SITUATION CONTAINED AND REPORTED

The banned individual is prevented from entering the facility and real-time intelligence is shared with public safety prior to their arrival. An incident report is securely logged with relevant information.

Technology View



DETECT

- Avigilon Control Center
- License Plate Recognition
- Orchestrate



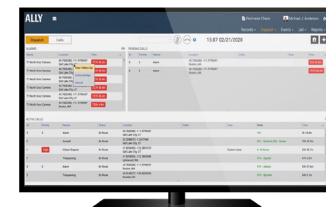
ANALYZE

- Fixed Video Security
- CommandCentral Aware Enterprise



COMMUNICATE

- Radio Communications: Voice & Multimedia
- WAVE PTX: Multimedia Sharing & Broadband Push-to-Talk
- Avtec Dispatch Console



RESPOND

- Critical Connect
- Ally Incident Response



*Camera footage is for illustrative purposes only

Motorola Solutions, Inc. 500 West Monroe Street, Chicago, IL 60661 U.S.A. motorolasolutions.com

MOTOROLA, MOTO, MOTOROLA SOLUTIONS and the Stylized M Logo are trademarks or registered trademarks of Motorola Trademark Holdings, LLC and are used under license. All other trademarks are the property of their respective owners. © 2021 Motorola Solutions, Inc. All rights reserved. 12-2021 [LD05]